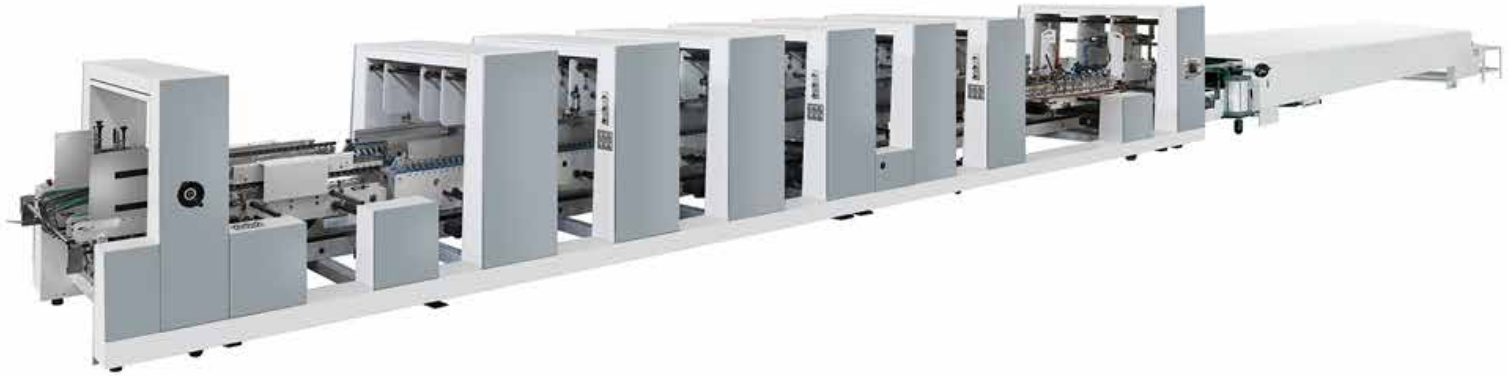


# ZIHONG ZH-1450 AC/PC

## Fully Auto Folding Gluing Machine



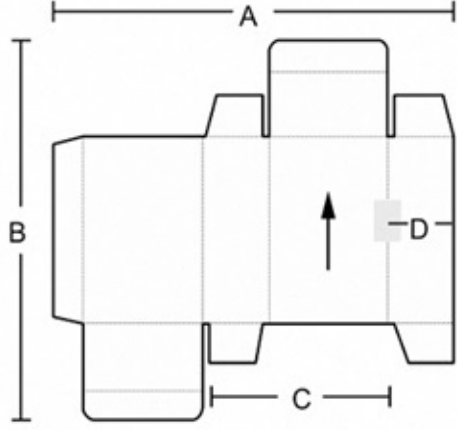
ZH-1450 AC/PC is a multi-functional machine, suitable for cardboard, E/C/B/A flute corrugated board. This model has correction device and bottom lock device. Can make electrical adjusting. Has UV destroying device and dust removing device for better gluing effect.

### TECHNICAL PARAMETERS

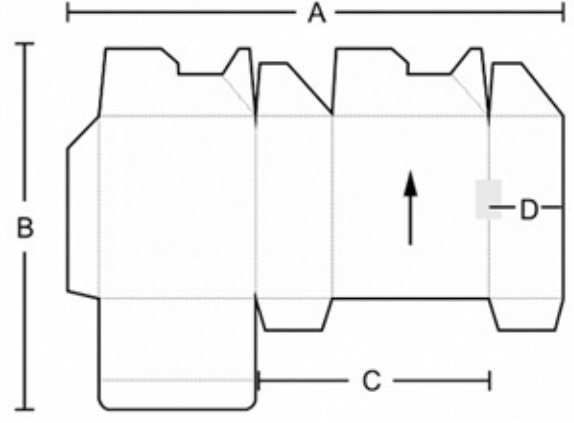
Model	ZH 1450 AC/PC
Suitable Material	Cardboard, E/C/B/A Flute Corrugated Board
Feeding Method	Automatic Continuous Feeding
Max. Mechanical Speed	300 m/min.
Overall Dimension	18000 x 2600 x 1750 mm
Weight	12 T
Power Consumption	25 kw

### CHARACTERS

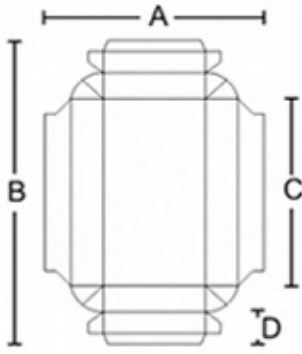
1. Driving by synchronous belt, ensure smooth and accurate running.
2. Inverter driving, stable and power saving.
3. Use tooth bar adjust (for higher configuration use electric adjust), easy operate.
4. Automatic continuous feeding, use multiple belt with vibrating motor, (for higher configuration use drilled suction belt), to keep the feeding stable.
5. Automatic counting and kicking, quantity can preset.
6. Conveyer pressure adjustable according to the box to ensure best quality.



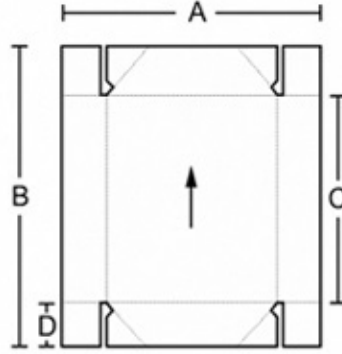
Yan Yapıştırma Kutu



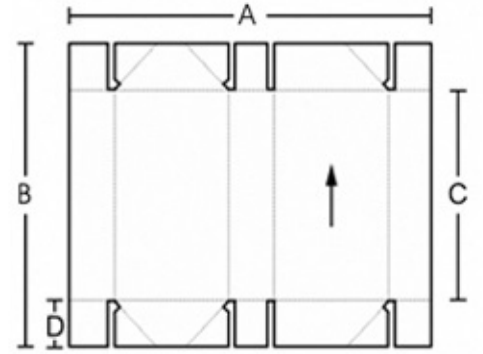
Dip Kilit Kutu



Çift Taraflı Kutu



4 Nokta Kutu



6 Nokta Kutu

ZH-1450 AC/PC						
A	MAX	1500	1100	1450	1300	1400
	MIN	300	350	350	400	400
B	MAX	1500	1300	1400	1100	1100
	MIN	80	200	150	250	250
C	MAX	730	1200	720	1000	1000
	MIN	140	150	170	200	200
D	MAX	350	250	350	300	300
	MIN	20	10	30	30	30

### 1. Feeder Section:



- \* Equipped with vibrating motor.
- \* With independent transmission, low noise, with front adjustable wheels, max. working capacity can be achieved.
- \* Suction feeding for continuous stable effect.
- \* Feeding knives and left and right registers fixing bar are controlled up and down by pneumatic system easily.
- \* Feeding knives are equipped with pneumatic mechanism for smoother feeding.

### 2. Paper Alignment System:



- \* Automatic alignment system to correct the paper feeding, avoiding the paper going to sides.

### 3. Bottom Lock Section:



- \* Lock-bottom assembly mechanism with high elastic hookers is of ideal design, fast and easy operation.

### 4. Folding Section:



- \* Equipped with speed variator for belts, ensure the folded boxes parallel and in good order.
- \* Fast, convenient adjustment and operation can fold boxes perfectly.
- \* The middle up and down transmission module can fold the boxes synchronously or alternately.

### 5. Trombone Section:



- \* Pressure can be adjusted according to paper thickness. For flute E/C/B/A corrugated board, overlapping and jogger devices are equipped to ensure box gulling well. After kicker is set up, whatever speed the machine runs, the kicker can automatically follow, no need to reset it.